

CHRISTIE[®]

VIVE AUDIO



Patrick Artiaga

Director, Business Development, Audio

Patrick.Artiaga@christiedigital.com

Solving the challenges of auditorium design:

- **Coverage:** Consistent volume levels throughout auditorium
 - *Christie Vive Line Arrays are single enclosure cabinets with set vertical coverage angles ranging from 30° to 50° averaging less than 4dB differential from front to back.*
- **Directivity:** Tightly controlled vertical and wide horizontal dispersion
 - *Christie Vive Line Arrays direct sound to the seating area minimizing acoustical reflections from rear wall and ceiling. Focused dispersion pattern improves dialogue intelligibility.*
- **Output:** Reproducing dynamic range of DCI content
 - *Christie Vive Line Arrays use aerospace materials such as Kapton which can handle higher power levels, especially when multiple ribbon drivers are combined in a line array.*

LS Series (Line Source)



LS1



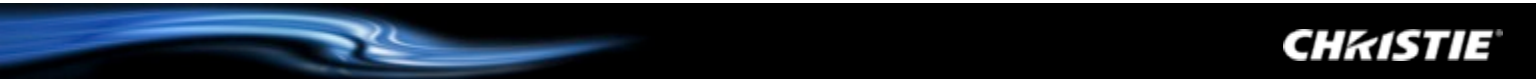
LS2



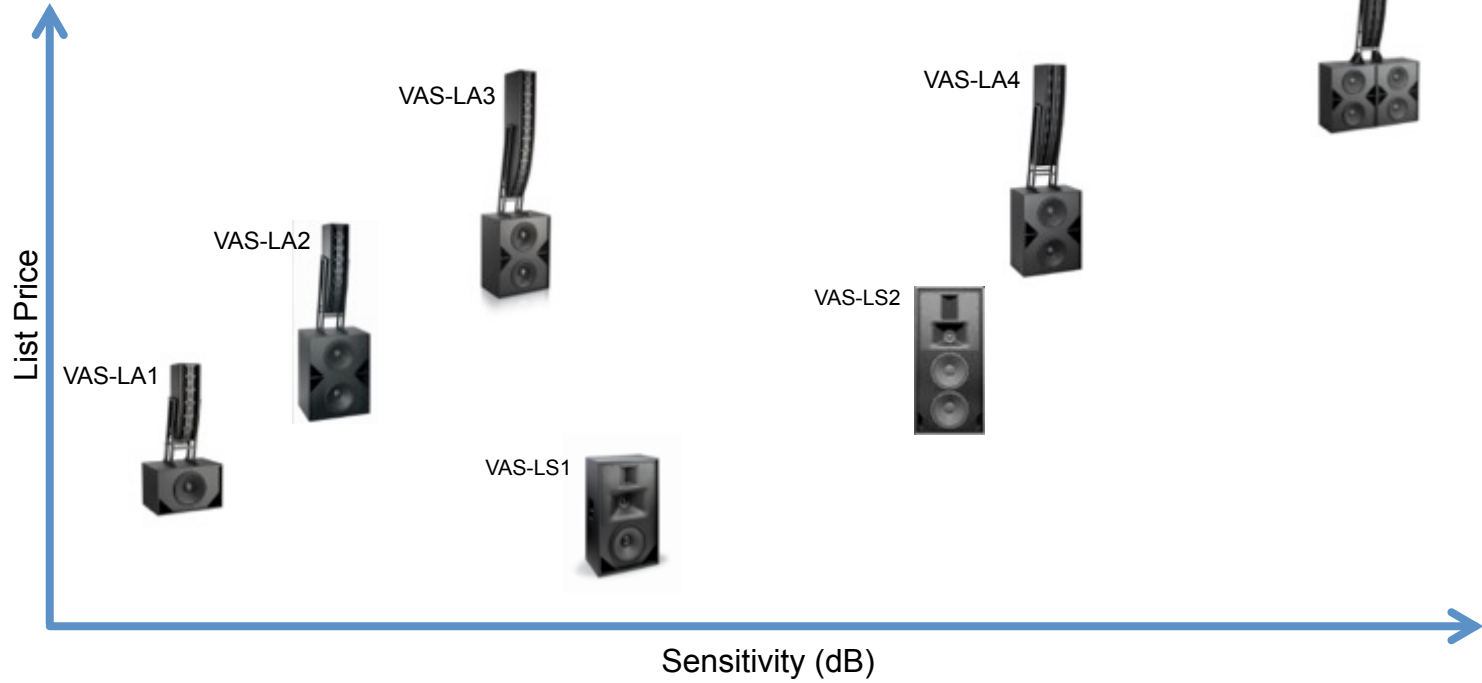
LS1S/LS2S



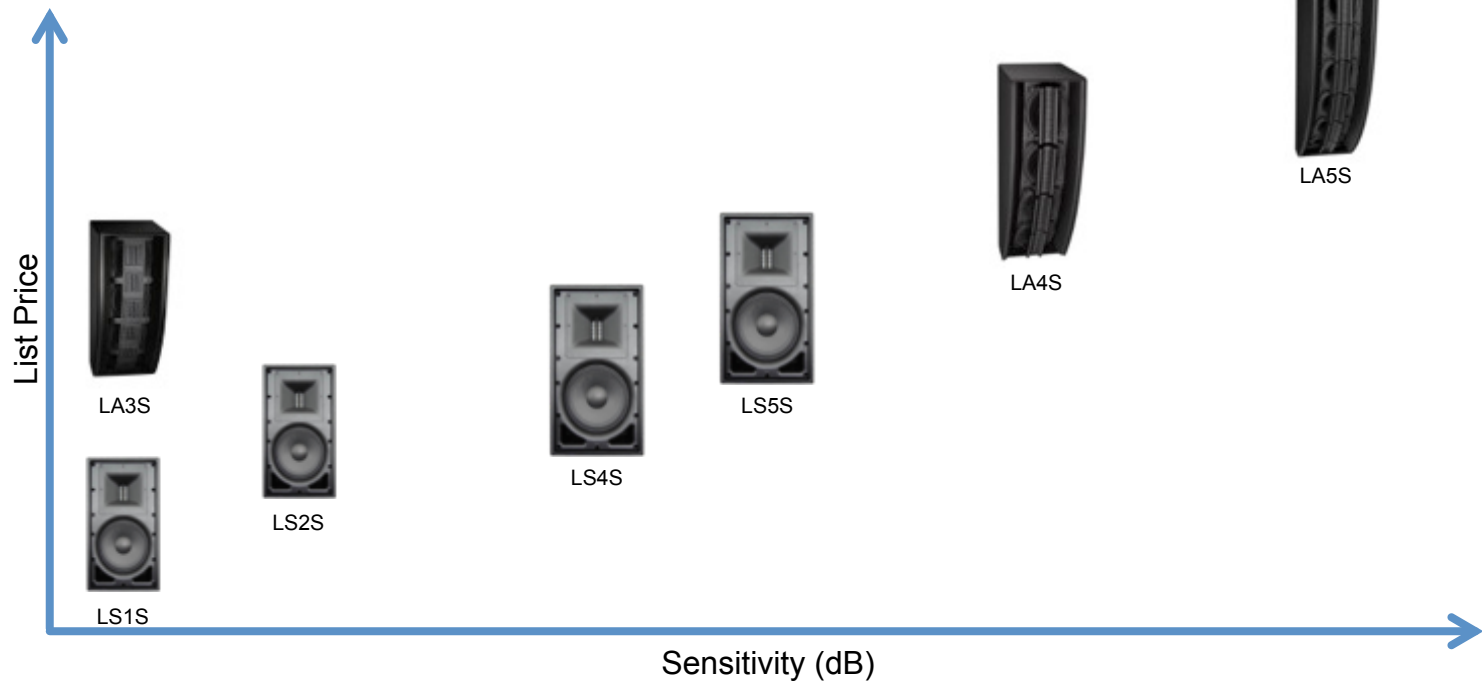
LS4S/LS5S



Vive Screen Channel Solutions



Vive Wall Surround Channel Solutions





The White House
The Executive Residence



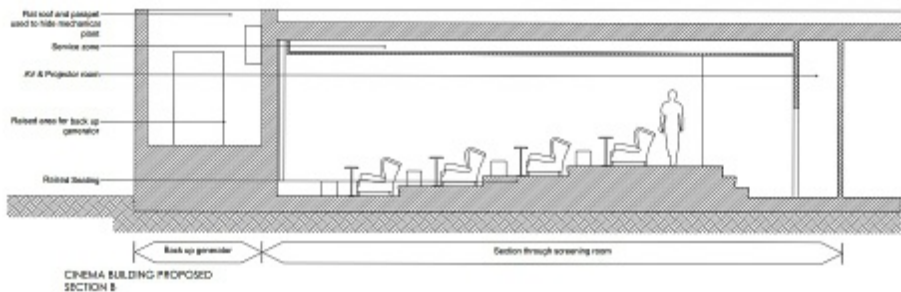
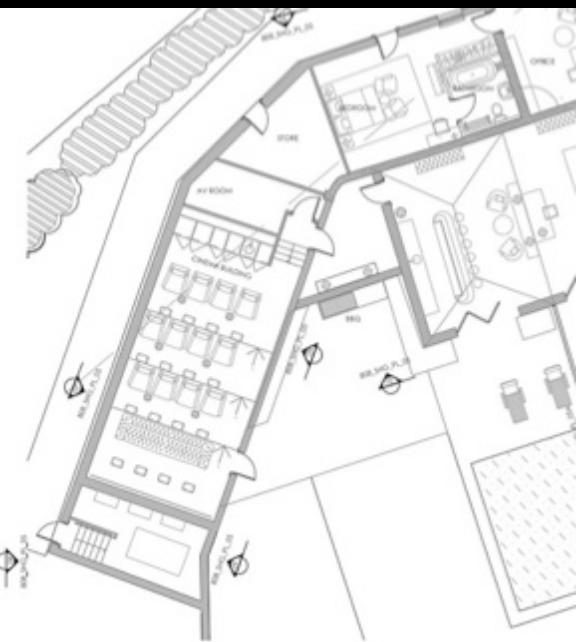
The White House
The Executive Residence



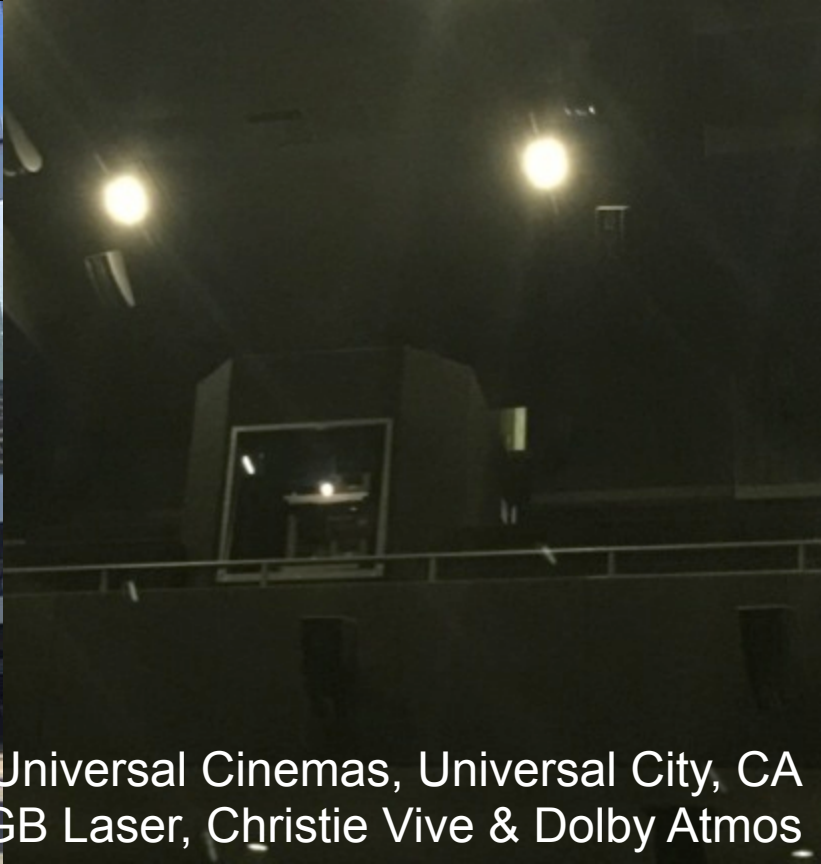
The White House
The Executive Residence



Clooney Residence
London



Clooney Residence
London



Universal Cinemas, Universal City, CA
All Christie RGB Laser, Christie Vive & Dolby Atmos

www.viveaudio.com

